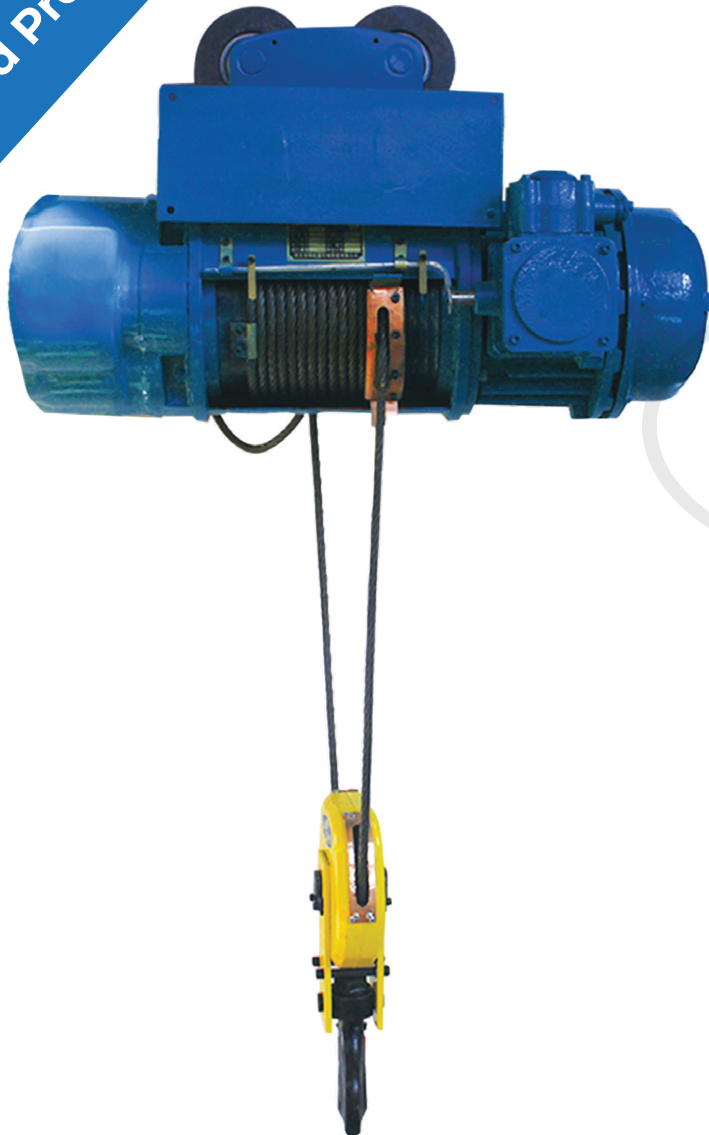




# FLAME PROOF ROPE HOIST

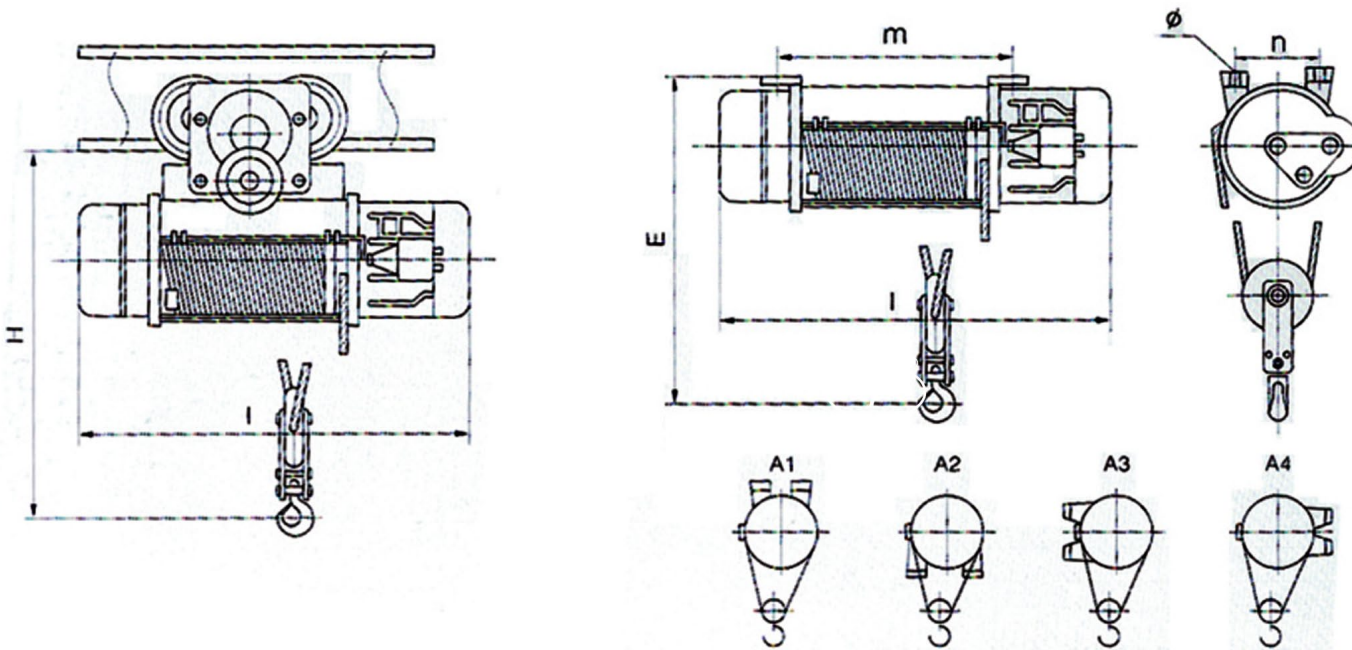
Fire Hazard Proof



CAPACITY: 1 TO 30 TONNES



- Robust Design
- Tested Quality Frame
- Wire Rope 6 X 37 Steel/Fibre Core - IS 2266
- Conical Rotor Motor Brake
- Poly Propylene Double Insulated Pendant - 36 Volt
- VFD Panel & Radio Remote (Optional)



TECHNICAL PARAMETERS

Refinery Special

Fire Hazard Proof

Capacity	Tonnes	1						2						3						5						10						
Product Code	KFPRH	4010206	4010209	4010212	4010218	4010224	4010230	4020206	4020209	4020212	4020218	4020224	4020230	4030206	4030209	4030212	4030218	4030224	4030230	4050206	4050209	4050212	4050218	4050224	4050230	4100406	4100409	4100412	4100418	4100424	4100430	
Lifting Height	m	6	9	12	18	24	30	6	9	12	18	24	30	6	9	12	18	24	30	6	9	12	18	24	30	6	9	12	18	24	30	
Lifting Speed	m/min	8						8						8						8												
Cross Travel Speed	m/min	20						20						20						20												
Hoist Motor Power	kw	1.5						3						4.5						7.5						13						
Cross Travel Motor Power	kw	0.2						0.4						0.4						0.8						0.5						
Dimensions	L	mm	820	915	1015	1210	1405	1600	875	975	1075	1275	1475	1675	930	1030	1136	1342	1548	1754	1050	1157	1262	1472	1682	1892	1501	1682	1863	2225	2587	2949
	F	mm	719			810			856			956			960			1061			1177			1327			1350					
	Bmax	mm	927						965						965						1100						1100					
Total weight	Kg	150	170	185	215	245	275	310	330	350	390	430	470	350	380	410	470	500	530	580	610	630	690	730	780	1100	1160	1240	1350	1480	1560	